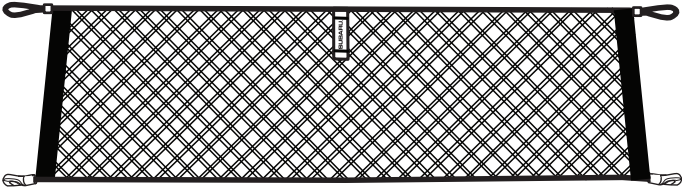
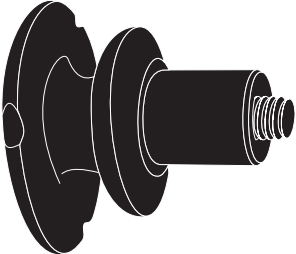

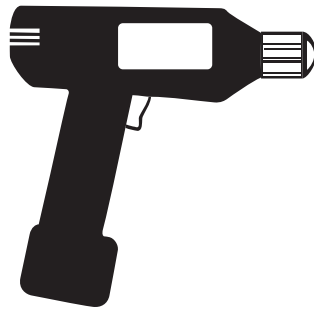
	PART NUMBER: F551SAL000	
	DESCRIPTION: SUBARU OUTBACK	
	REAR NET	

A	KIT CONTENTS:	B	2X	C	2X
					
				D 2X Marking Templates	

TOOLS REQUIRED:



(1/2") 13mm Drill Bit














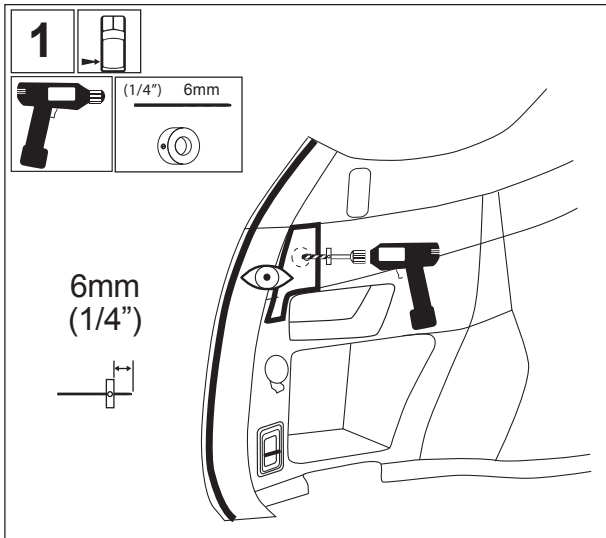
(1/4") 6mm Drill Bit



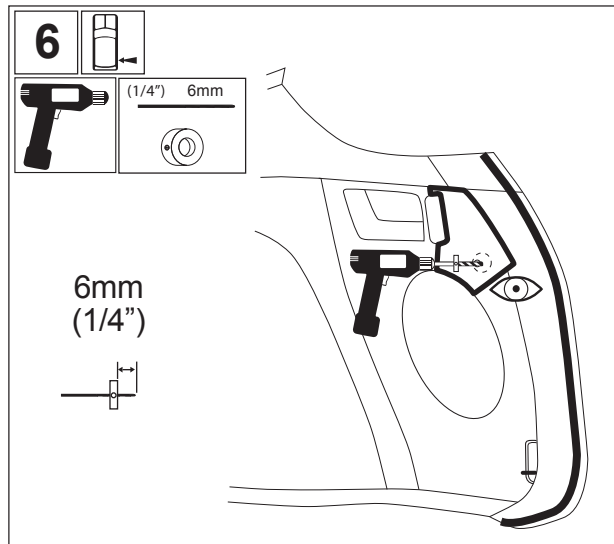
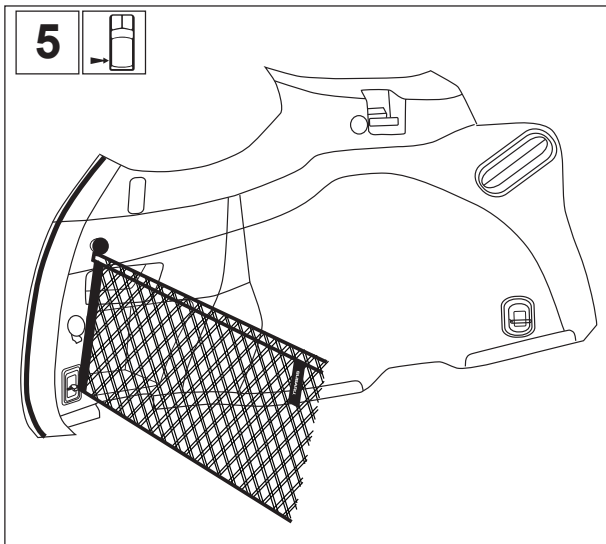
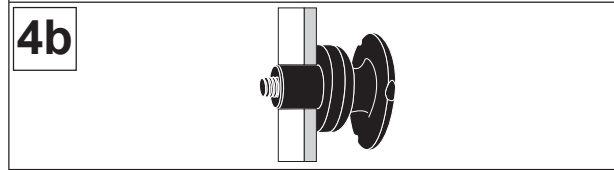
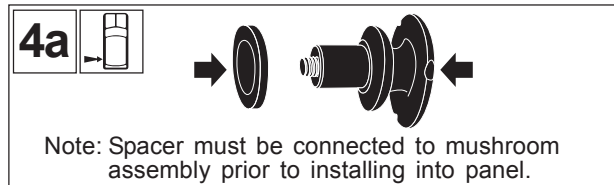
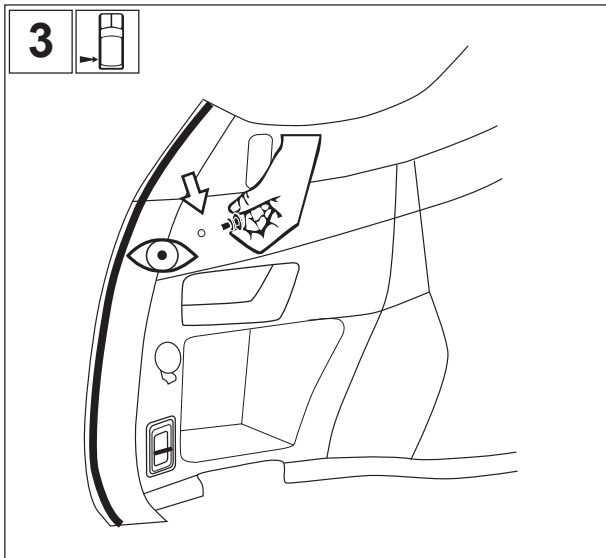
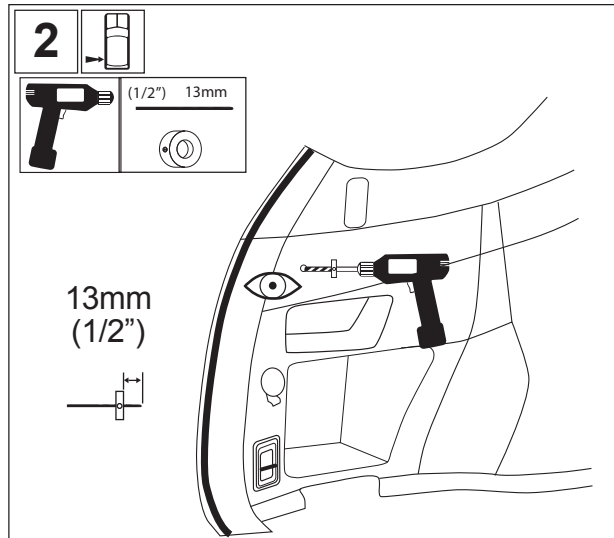
Drill Stop

Meaning of Characters:

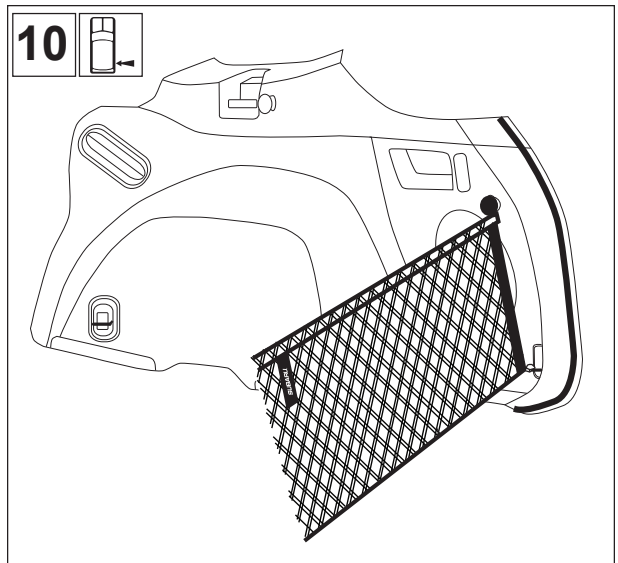
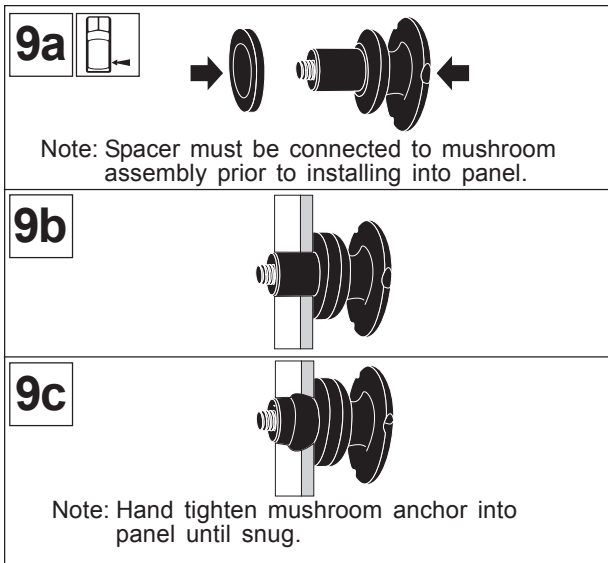
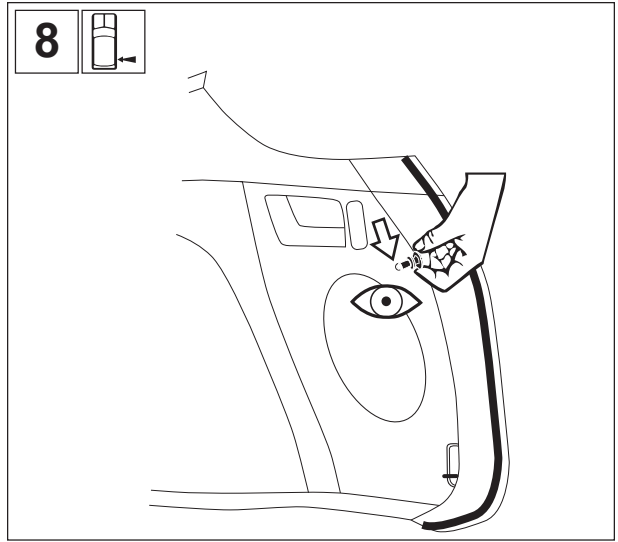
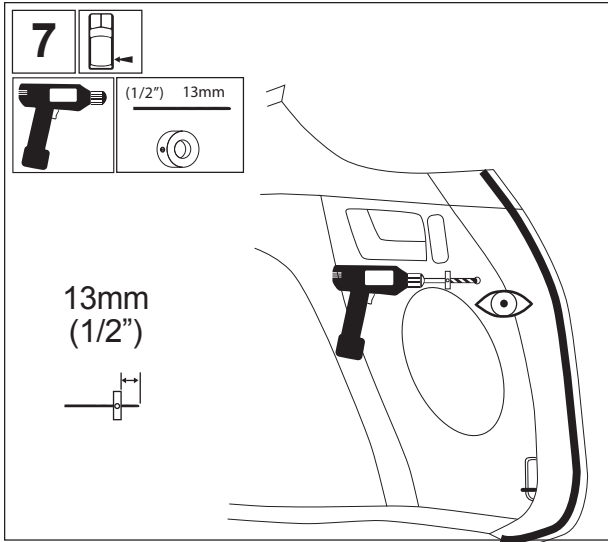
- | | |
|--|---|
|  : Remove | T : Tightening Torque |
|  : Install |  : Loosen |
|  : Disconnect |  : Discard |
|  : Connect |  : Recyclable |
|  : Location of pre-arranged mark |  : View |
|  : Driver side rear cargo area | |
|  : Passenger side rear cargo area | |



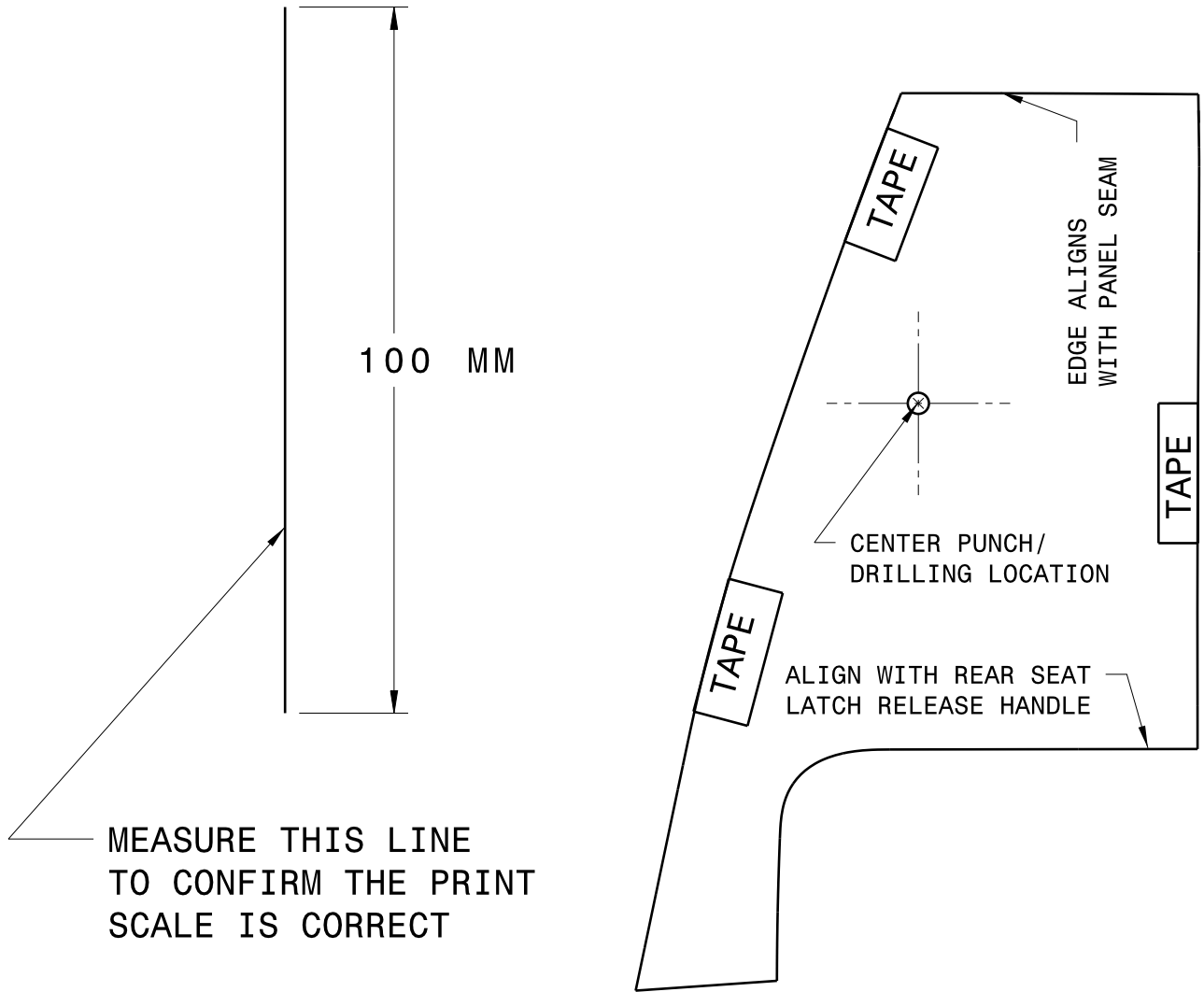
Note: Align marking templates per the instructions given prior to drilling.



Note: Align marking templates per the instructions given prior to drilling.



CAR FORWARD →

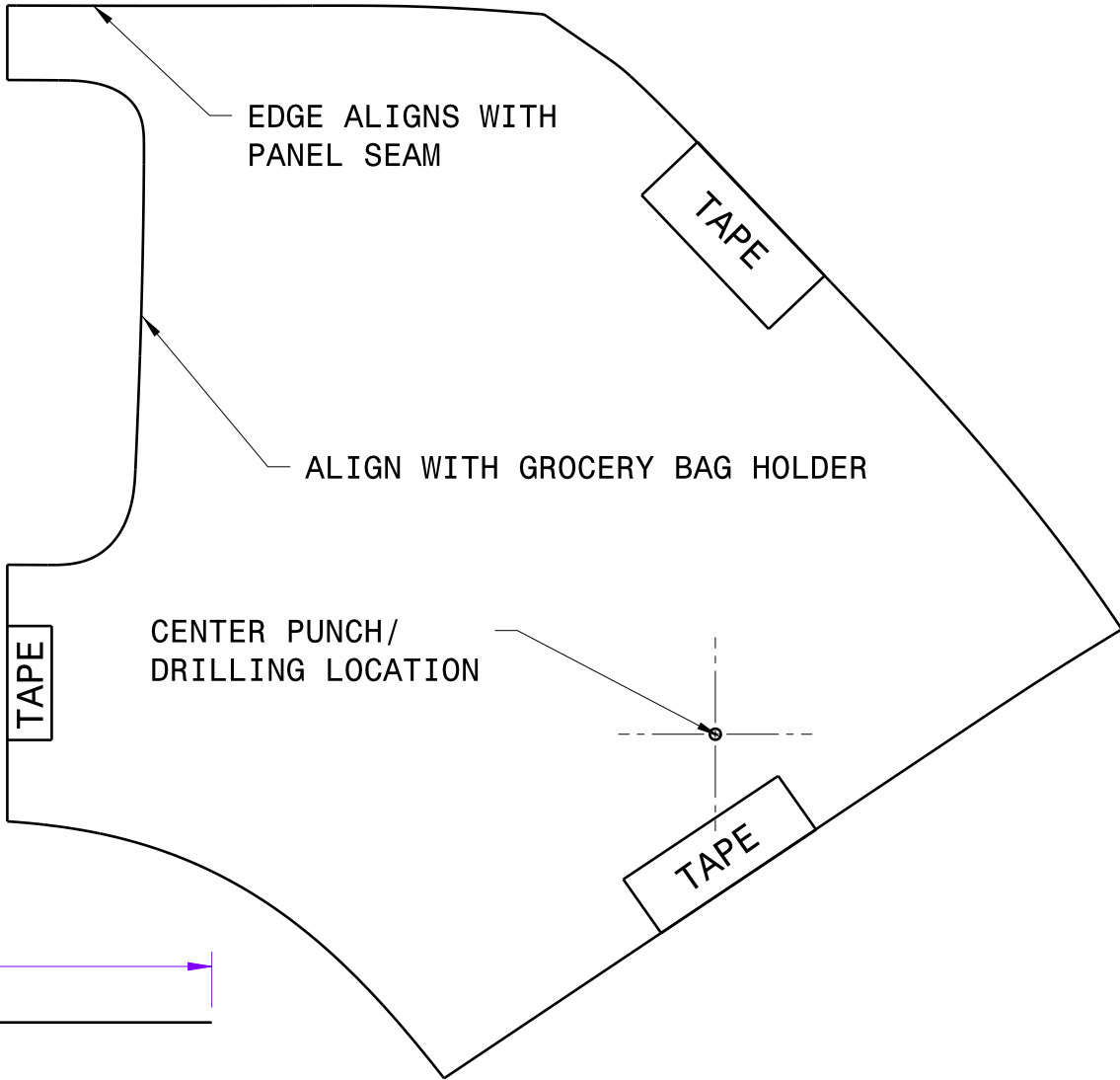


100 MM

MEASURE THIS LINE TO CONFIRM THE PRINT SCALE IS CORRECT

SUBARU OUTBACK LEFT REAR MARKING TEMPLATE

← CAR FORWARD



EDGE ALIGNS WITH PANEL SEAM

TAPE

ALIGN WITH GROCERY BAG HOLDER

TAPE

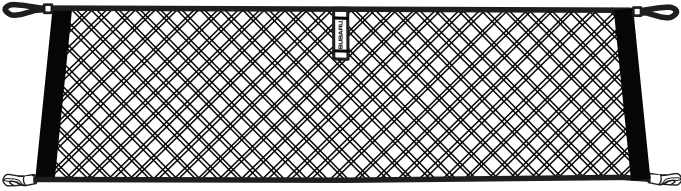
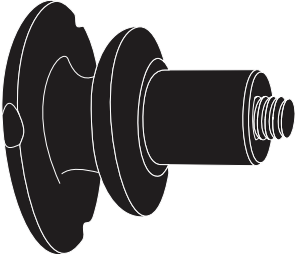

CENTER PUNCH / DRILLING LOCATION

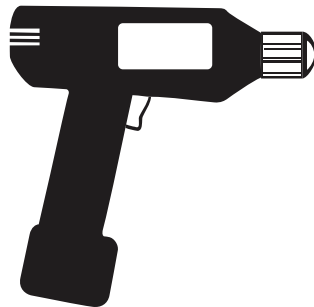
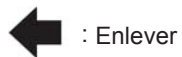
TAPE

100 MM

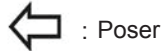
MEASURE THIS LINE TO CONFIRM THE PRINT SCALE IS CORRECT.

SUBARU OUTBACK
RIGHT REAR MARKING TEMPLATE

A CONTENU DE LA TROUSSE : 	B 2 	C 2  D 2 Gabarits de traçage
--	---	--

OUTILS REQUIS :**Mèche de 13 mm (1/2 po)****Mèche de 6 mm (1/4 po)****Butée****Signification des symboles :**

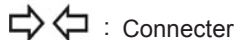
: Enlever



: Poser



: Déconnecter



: Connecter



: Emplacement de la marque

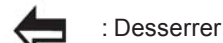


: Espace utilitaire côté conducteur



: Espace utilitaire côté passager

T : Couple de serrage



: Desserrer



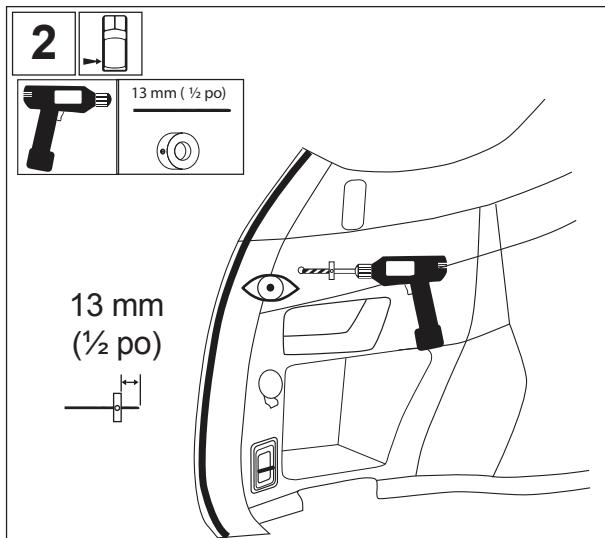
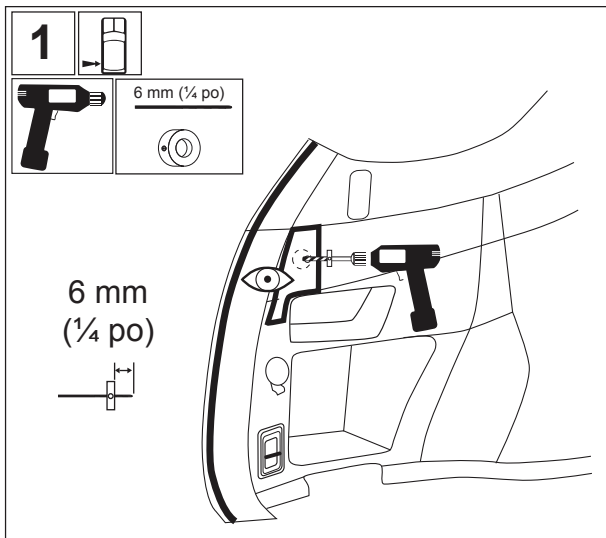
: Jeter



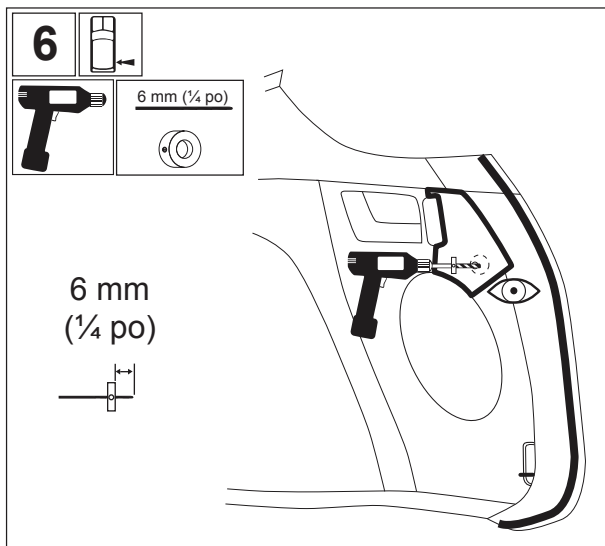
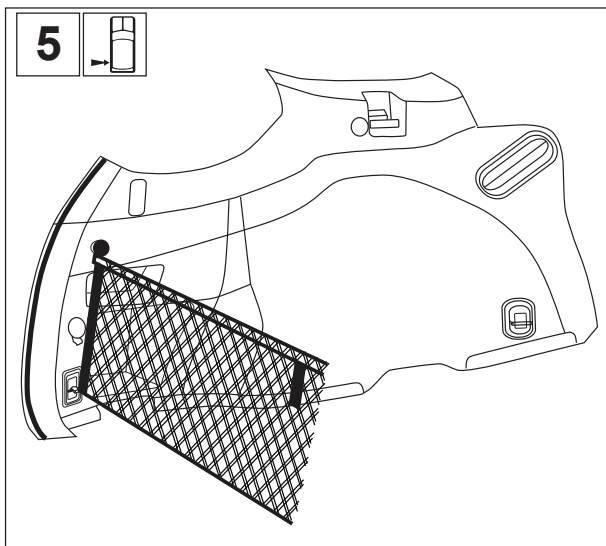
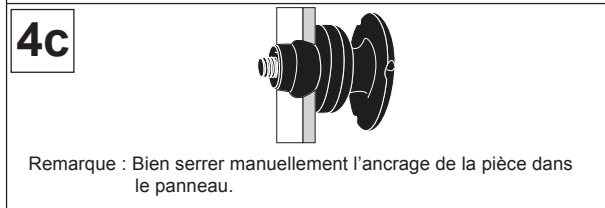
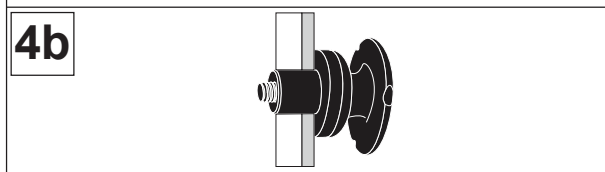
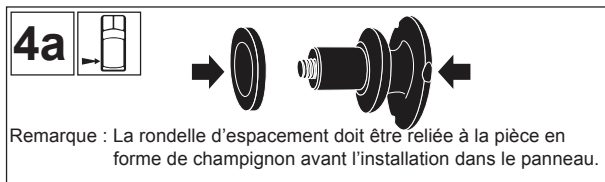
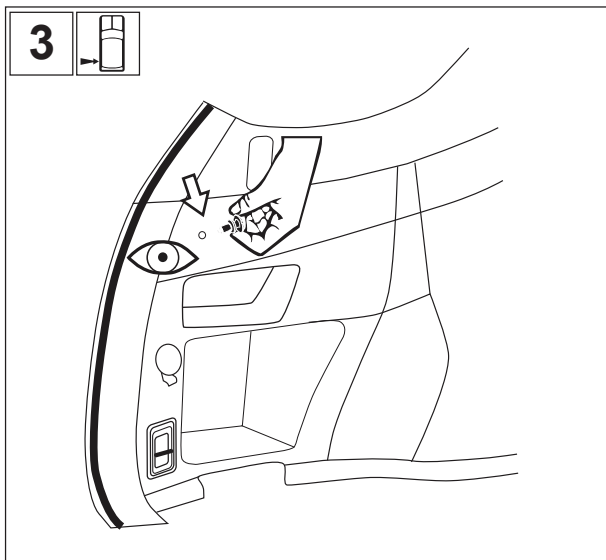
: Recyclable



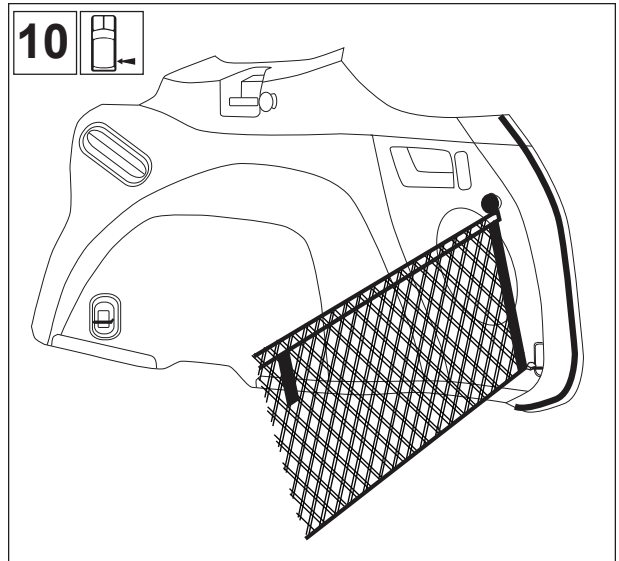
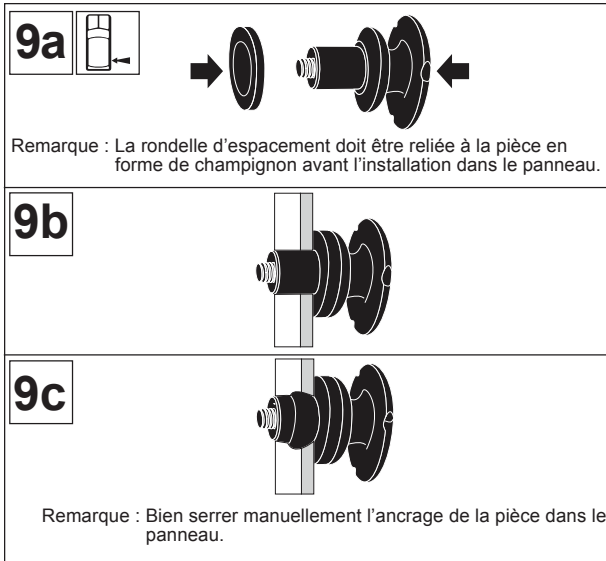
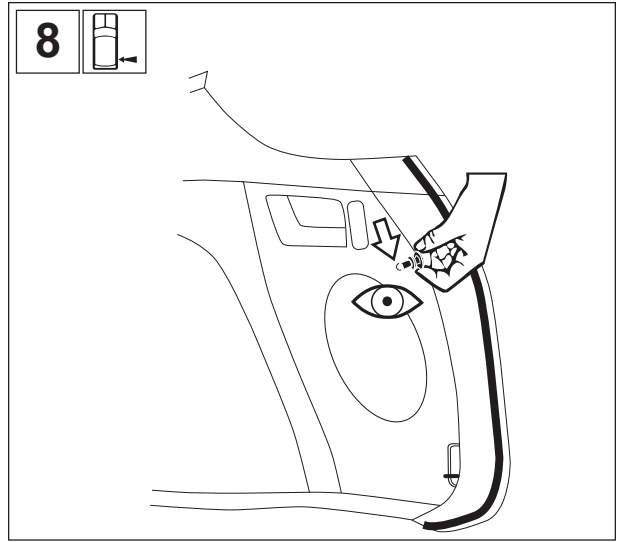
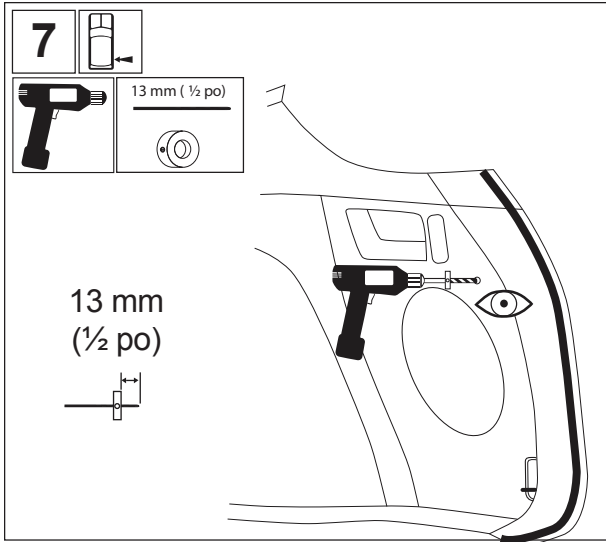
: Vue



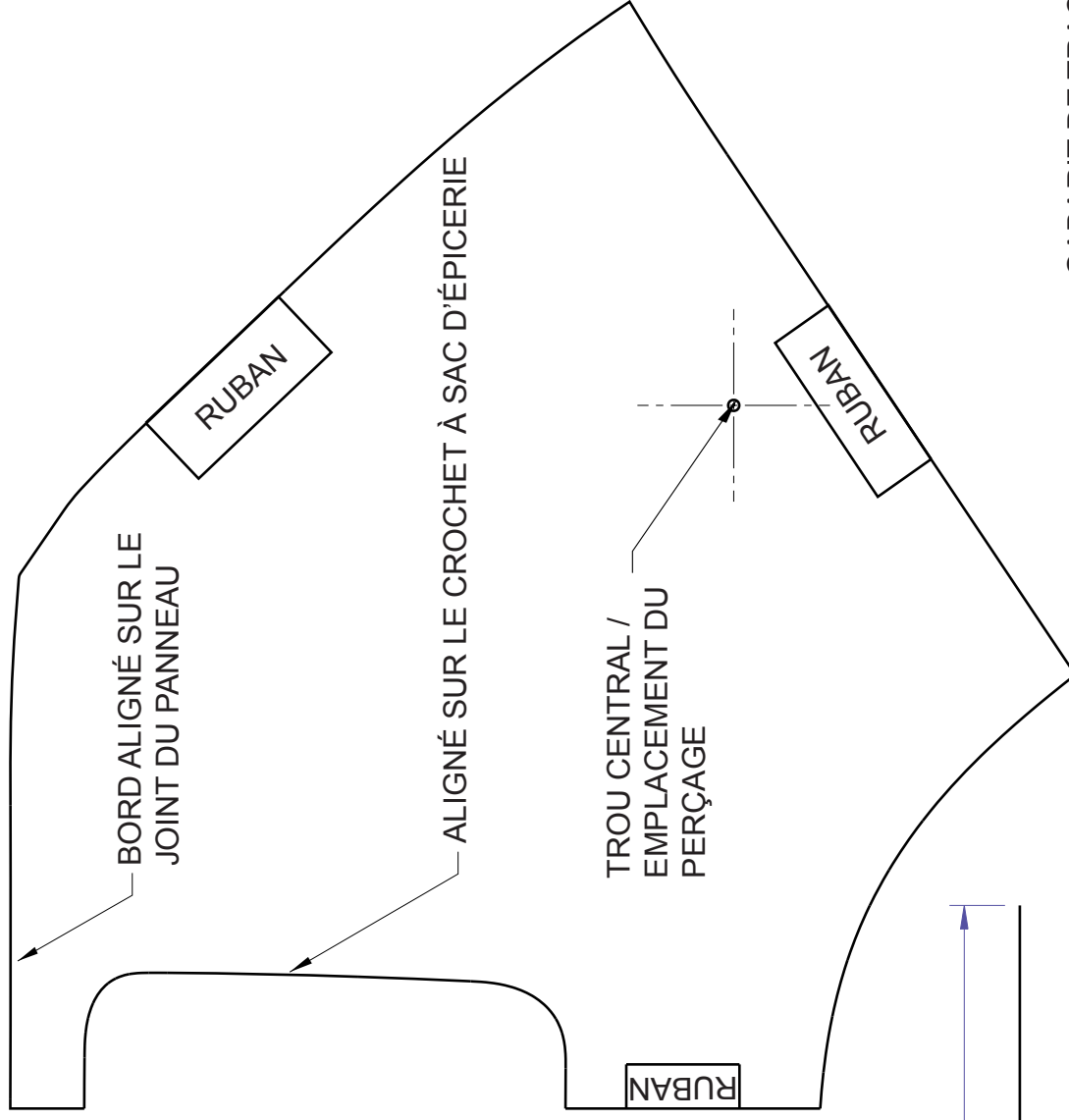
Remarque : Aligner les gabarits de traçage conformément aux instructions fournies avant de percer.



Remarque : Aligner les gabarits de traçage conformément aux instructions fournies avant de percer.



VOITURE ORIENTÉE
VERS L'AVANT

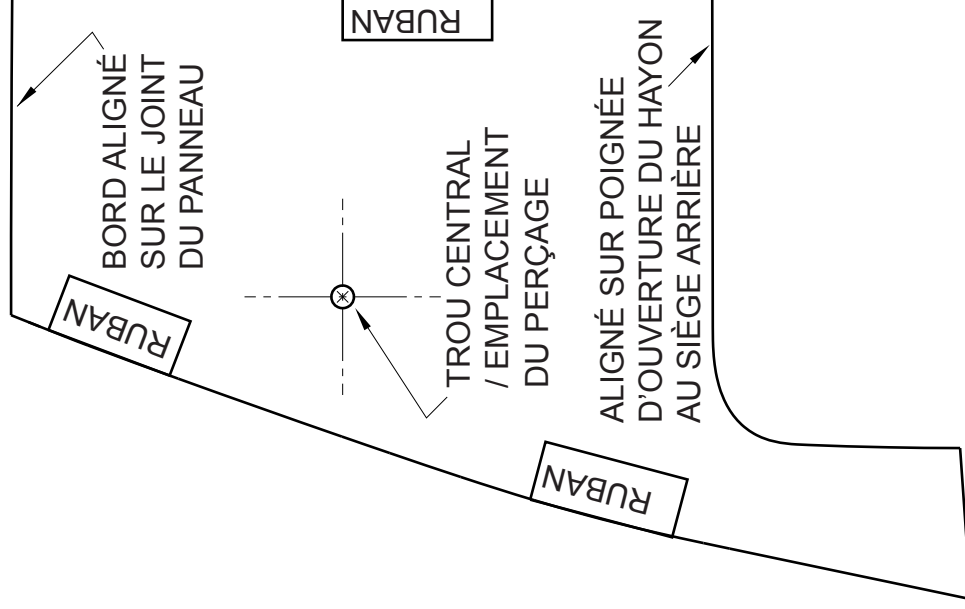
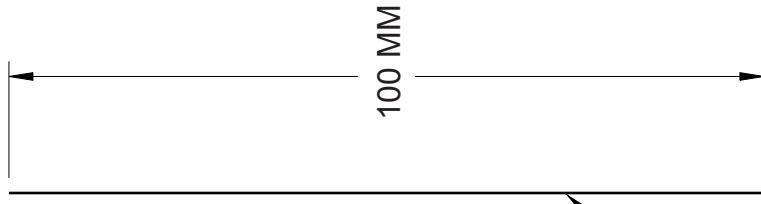


100 MM

MESURER CETTE LIGNE POUR VÉRIFIER
L'ÉCHELLE D'IMPRESSON.

GABARIT DE TRAÇAGE
ARRIÈRE DROIT, OUTBACK
DE SUBARU

VOITURE ORIENTÉE
VERS L'AVANT



MESURER CETTE LIGNE
POUR VÉRIFIER L'ÉCHELLE
D'IMPRESSION.

GABARIT DE TRAÇAGE ARRIÈRE
DROIT, OUTBACK DE SUBARU